

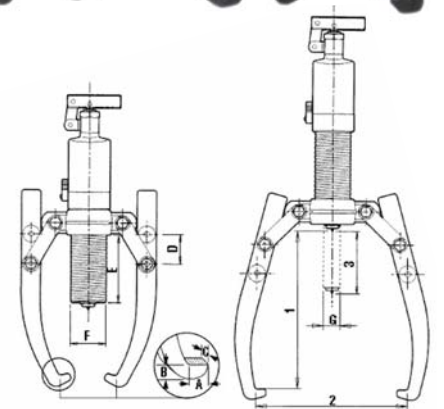
HYDRAULIC PULLERS

BETEX HP 2/3-arm pullers, with integrated pump and cylinder



Compact, ergonomic design, easily operated by one person!

- **Multifunctional:**
These HP-pullers are ideal for pulling a wide variety of parts, including bearings, bushings, wheels, gears and pulleys. Applications for HP-pullers will be found in motor repair shops, service companies, maintenance shops, industry, mining, paper mills, chemical plants, shipping, offshore, etc.
- **Compact:**
The self contained hydraulic pump and cylinder save space, as you don't need a separate pump, hose or puller.
- **Strong:**
The harder the force, the tighter the jaws grip. The arms cannot bend or deflect.
- **Economical:**
2/3-arm combination puller, 2 pullers for the price of one, including integrated pump and cylinder!



- **Safe:**
The improved integral safety release valve prevents overloading and ensures that you will never exceed the maximum power capacity.
- **Versatile:**
Various accessories are available. Sets are supplied in practical PE case and consist of a puller block, connecting rods and a set of bearing splitters.

4, 6, 8, 12, 20 and 30 ton capacity!

BETEX HP 2/3 Hydraulic pullers

TIP! For accessory sets see page 14,15

Type	Art. no.	Cap. ton	Max. shaft length mm	Max. spread mm	Stroke mm	A mm	B mm	C mm	D mm	E mm	F mm	G mm	Weight Kg
HP 43 *	791000	4	185	275	60	11	6	22	32	84	42	22	4.5
HP 63 *	792000	6	215	300	85	11	10	25	51	122	45	25	6.5
HP 83 *	793000	8	230	350	85	11	10	25	51	122	50	25	6.5
HP 123 *	794000	12	270	375	85	14	10	29	51	118	60	28	8.0
HP 203**	796000	20	360	520	111	20	27	33	60	161	80	40	22.0
HP 303**	797000	30	360	550	111	20	27	38	60	155	68	50	32.0

* Incl. safety net ** incl. safety blanket

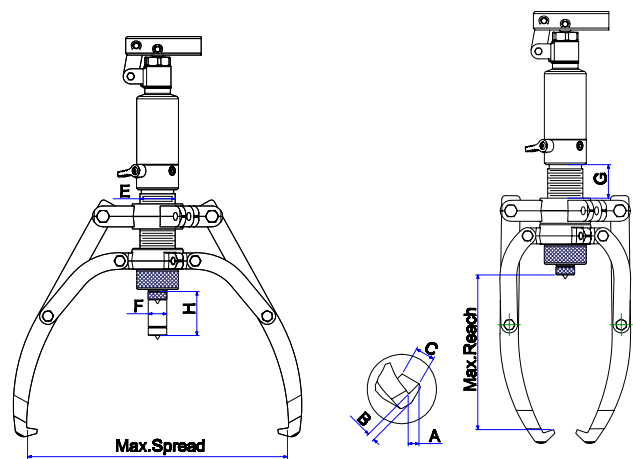
HYDRAULIC PULLERS

BETEX HSP 2/3-arm pullers, **self-centering**, with integrated pump and cylinder



Compact, ergonomic design, easily operated by one person!

- **Practical!**
Self-centering, easy to convert, 2-arm or 3-arm puller. The arms slide inwards or outwards simultaneously.
- **Compact!**
The self contained hydraulic pump and cylinder save space, as you don't need a separate pump, hose or puller.
- **Strong!**
The harder the force, the tighter the jaws grip. The arms cannot bend or deflect.
- **Economical!**
2/3-arm combination puller, 2 pullers for the price of one, including integrated pump and cylinder!
- **Safe!**
The integral safety release valve prevents overloading and ensures that you will never exceed the maximum power capacity.
- **Versatile!**
Various accessories are available. Sets are supplied in practical PE case and consist of a puller block, connecting rods and a set of bearing splitters.



Advantages of self-centering pullers:

- Prevents damage to shaft and workpiece being pulled.
- Efficient and saves time.
- Can be used in any position.
- Adapters included.

4, 6, 8, 12, 20 and 30 ton capacity!

BETEX HSP 2/3 Hydraulic self-centering pullers

TIP! For accessory sets see page 14,15

Type	Art. no.	Cap. ton	Max. shaft length mm	Max. spread mm	Stroke mm	A mm	B mm	C mm	D mm	E mm	F mm	G mm	Weight Kg
HSP 43*	791500	4	190	325	60	13	10	22	-	40	42	22	8.0
HSP 63*	792500	6	230	380	70	13	10	22	-	50	45	23	10.0
HSP 83*	793500	8	280	450	85	13	13	27,5	-	70	50	25	12.0
HSP 123*	794500	12	305	485	85	15	16,5	29	-	70	60	28	15.0
HSP 203**	796500	20	365	570	111	20	27	33	-	62	80	40	25.0
HSP 303**	797500	30	465	680	111	20	27	38	-	85	98	50	36.0

* Incl. safety net ** incl. safety blanket

HYDRAULIC PULLERS

BETEX HXP 2/3-arm pullers, **self-centering**



Safe and easy dismantling of bearings, couplings, rings etc.

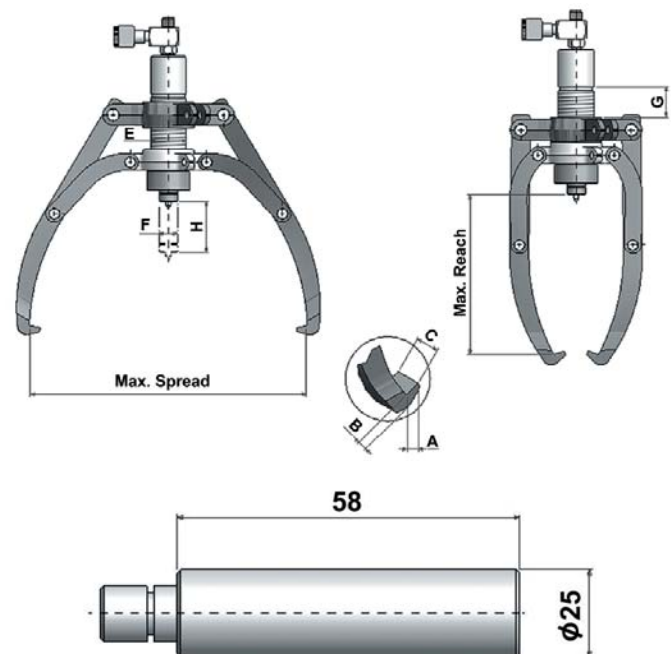
Separate 2-stage handpump available

- **Practical!**
Self-centering, easy to convert, 2-arm or 3-arm puller. The arms slide inwards or outwards simultaneously.
- **Safe!**
Arms can never deflect!
- **Economical!**
2/3-arm combination puller, 2 pullers for the price of one.
- **Strong!**
The greater the pulling force, the tighter the jaws grip!
The arms cannot bend or deflect.

Advantages of self-centering pullers:

- Prevent damage to shaft and workpiece being pulled.
- Work efficient and save time.
- Accessory sets are available for the 8 and 12 ton pullers.
- Supplied in handy carrying case.
- HXP503 also available with mobile crane (see page 18-19).

8, 12, 20, 30 and 50 ton capacity!



TIP! Use in combination with accessories, pag 14,15, hand- and foot pump sets, from pag 55

BETEX HXP 2/3 Hydraulic self-centering pullers

Type	Art. no.	Cap. ton	Max. shaft length mm	Max. spread mm	Stroke mm H	Pump tip mm			Jaw tip mm			Weight Kg
						E	F	G	A	B	C	
HXP 83*	793600	8	280	450	85	42	22	40	13	10	22	9.0
HXP 123*	794600	12	305	485	85	50	25	70	13	13	27.5	11.7
HXP 203**	796600	20	365	570	111	60	28	70	15	16.5	29	24.0
HXP 303**	797600	30	465	680	111	80	40	62	20	27	33	34.0
HXP 503**	799600	50	455	860	330	98	50	85	20	27	38	140.0

* Incl. safety net ** incl. safety blanket

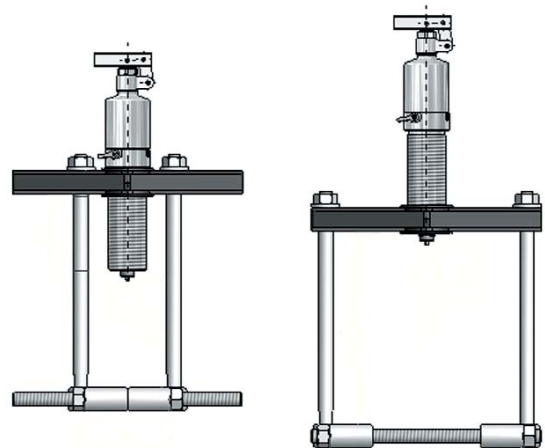
ACCESSORY SETS

BETEX BEARING SPLITTERS

This accessory set consists of:

- 1 puller block
- 2 connecting rods (legs)
- 1 set of bearing splitters for a min./max Ø 15-225 mm

You can use the cylinder from the HP/HSP/HXP series.



ACCESSORY SETS FOR 4, 6, 8, 12 TON PULLERS HP, HSP, HXP, HPP

Type	Art. no.	Cap. ton	Shaft length mm	Min/max Spread mm	Weight kg
Acc. Set HP 43, HSP 43	791100	4	250	Ø 15-110	8.5
Acc. Set HP 63, HSP 63,	792100	6	280	Ø 25-150	12.5
Acc. Set HP 83, HSP 83, HXP 83	793100	8	280	Ø 40-150	12.5
Acc. Set HP 123, HSP 123, HXP 123, HPP 123	794100	12	325	Ø 45-225	18.0

ACCESSORY-SETS

BETEX TRI-SECTION PLATES



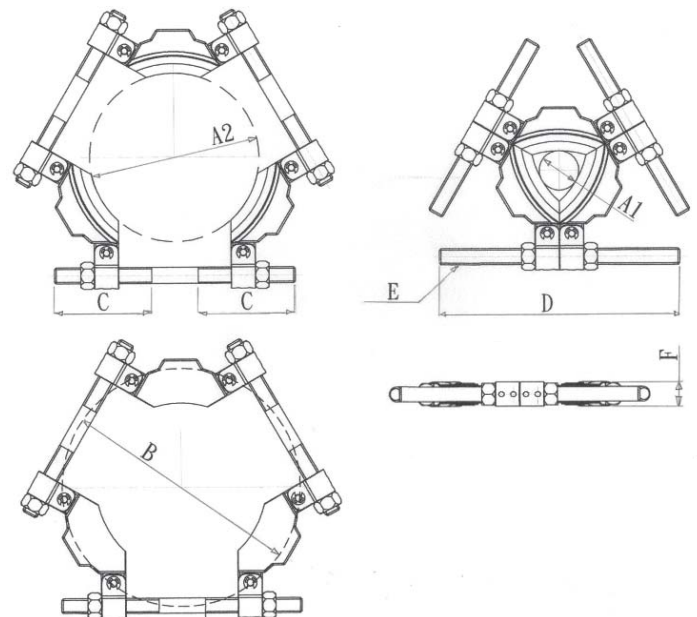
Tri-section plate

The tri-section plates are specially designed to be used in conjunction with the three-armed pullers. The unique and patented swivel design creates maximum spread and applies even force at the most efficient point. The plates grip behind the inner and outer rings of the bearing, preventing the pulling force from being transmitted through the moving parts, minimizing the risk of bearing damage.

User-friendly

- Unique, patented swivel design creates maximum spread.
- The tri-section construction provides even-force distribution, preventing bearings from locking and/or tilting on the shaft during removal.
- Suitable for use in conjunction with all three-armed hydraulic pullers.
- Available in a wide range, covering the most common shaft sizes.

The Tri-section plate series consist of 4 different sizes of tri-section plates that are suitable for shafts of max. Ø ranging from 26 to 495 mm (2" to 19.5").



Use in combination with

Tri-section 160: HP/HSP 43, 63
 Tri-section 210: HP/HSP 63, 83
 Tri-section 340: HP/HSP/HXP 83, 123, 203, HPP 123
 Tri-section 495: HP/HSP/HXP 203, 303

Typ	Art. no.	Cap. ton	Available shaft diam		Spread B (mm max)	C mm	D mm	E	F mm	Weight kg
			A1 mm	A2 mm						
Tri-section 160	791160	6	26	160	216	105	240	5/8"-11UNC	8	3.5
Tri-section 210	791210	8	50	210	280	115	285	3/4"-16UNF	31	5.5
Tri-section 340	791340	20	90	340	460	170	430	7/8"-14UNF	45	16.5
Tri-section 495	791495	30	140	495	660	240	600	1"-14UNF	61	41