

HYDRAULIC PULLERS

BETEX HP 2/3-arm pullers, with integrated pump and cylinder



Compact, ergonomic design, easily operated by one person!

- **Multifunctional!**

These HP-pullers are ideal for pulling a wide variety of parts, including bearings, bushings, wheels, gears and pulleys. Applications for HP-pullers will be found in motor repair shops, service companies, maintenance shops, industry, mining, paper mills, chemical plants, shipping, offshore, etc.

- **Compact!**

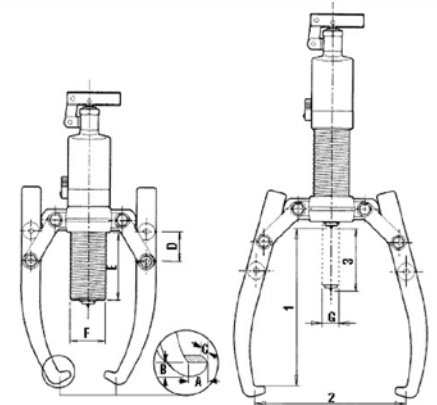
The self contained hydraulic pump saves space, as you don't need a separate pump, hose or cylinder.

- **Strong!**

The harder the force, the tighter the jaws grip!
The arms cannot bend or deflect.

- **Economical!**

2- or 3-arm combination puller, two pullers for the price of one, including integrated pump and cylinder!



- **Safe!**

The integral safety release valve prevents overloading and ensures you never exceed maximum power capacity.

- **Versatile!**

Various accessories are available. The sets are supplied in a practical PE case and consist of a puller block, connecting rods and a set of bearing splitters.

4, 6, 8, 12, 20 and 30 ton capacity!

BETEX HP 2/3-arm hydraulic pullers

TIP! For accessory sets see page 60-61

Type	Art. no.	Cap. ton	Max. shaft length mm	Max. spread mm	Stroke mm	A mm	B mm	C mm	D mm	E mm	F mm	G mm	Weight Kg
HP 43 *	791000	4	185	255	60	11	6	22	32	84	42	22	4.5
HP 63 *	792000	6	220	330	70	13	10	25	51	122	45	25	6.5
HP 83 *	793000	8	230	350	85	11	10	25	51	122	50	25	6.5
HP 123 *	794000	12	270	375	85	14	10	29	51	118	60	28	8.0
HP 203**	796000	20	360	520	111	20	27	33	60	161	80	40	22.0
HP 303**	797000	30	360	550	111	20	27	38	60	155	98	50	32.0

* incl. safety net

** incl. safety blanket

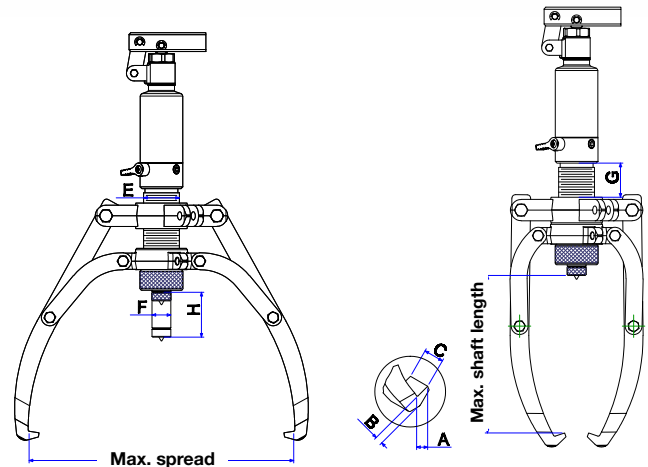
HYDRAULIC PULLERS

BETEX HSP 2/3-arm pullers, **self-centering**, with integrated pump and cylinder



Compact, ergonomic design, easily operated by one person!

- **Practical!**
Self-centering, easy to convert, 2-arm or 3-arm puller. The arms slide inwards or outwards simultaneously.
- **Compact!**
The self contained hydraulic pump saves space, as you don't need a separate pump, hose or cylinder.
- **Strong!**
The harder the force, the tighter the jaws grip. The arms cannot bend or deflect.
- **Economical!**
2/3-arm combination puller, two pullers for the price of one, including integrated pump and cylinder!
- **Safe!**
The integral safety release valve prevents overloading and ensures you never exceed maximum power capacity.
- **Versatile!**
Various accessories are available. The sets are supplied in a practical PE case and consist of a puller block, connecting rods and a set of bearing splitters.



Advantages of these self-centering pullers:

- Prevent damage to shaft and workpiece being pulled.
- Efficient and saves time.
- Can be used in any position.
- Adapters included.

4, 6, 8, 12, 20 and 30 ton capacity!

BETEX HSP 2/3-arm hydraulic self-centering pullers

TIP! For accessory sets see page 60-61

Type	Art. no.	Cap. ton	Max. shaft length mm	Max. spread mm	Stroke mm	A mm	B mm	C mm	D mm	E mm	F mm	G mm	Weight Kg
HSP 43*	791500	4	190	315	60	13	10	22	-	40	42	22	8.0
HSP 63*	792500	6	230	390	70	13	10	22	-	50	45	23	10.0
HSP 83*	793500	8	280	463	85	13	13	27.5	-	70	50	25	12.0
HSP 123*	794500	12	300	515	85	15	16.5	29	-	70	60	28	15.0
HSP 203**	796500	20	325	520	111	20	27	33	-	62	80	40	25.0
HSP 303**	797500	30	415	620	111	20	27	38	-	85	98	50	36.0

* incl. safety net

** incl. safety blanket

HYDRAULIC PULLERS

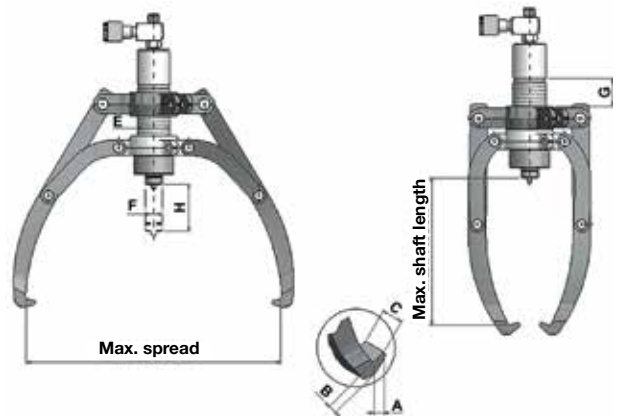
BETEX HXP 2/3-arm pullers, **self-centering**



Safe and user-friendly dismantling of bearings, couplings, rings etc.

Separate 2-stage handpump available

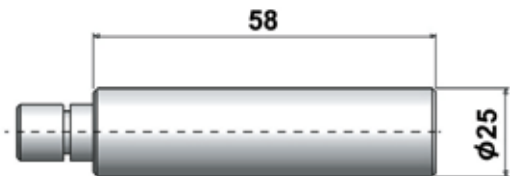
- **Practical!**
Self-centering, easy to convert 2- or 3-arm puller. The arms slide inwards or outwards simultaneously.
- **Safe!**
Arms can never deflect!
- **Economical!**
2- or 3-arm combination puller. Two pullers for the price of one.
- **Strong!**
The greater the pulling force, the tighter the jaws grip! The arms cannot bend or deflect.
- HXP503 also available with mobile crane (see page 64 + 65).



Advantages of self centering pullers:

- Prevent damage to shaft and workpiece being pulled.
- Work efficient and save time.
- Accessory sets are available for the 8 and 12 ton pullers.
- Supplied in handy carrying case.

8, 12, 20, 30 and 50 ton capacity!



TIP! Use in combination with accessories page 60-61 and hand and foot pump sets, from page 93.

BETEX HXP hydraulic self-centering pullers

Type	Art. no.	Cap. ton	Max. shaft length mm	Max. Spread mm	Stroke H mm	Pump tip mm			Jaw tip mm			Weight Kg
						E	F	G	A	B	C	
HXP 83*	793600	8	280	460	85	42	22	40	13	10	22	9.0
HXP 123*	794600	12	300	515	85	50	25	70	13	13	27.5	11.7
HXP 203**	796600	20	325	520	111	60	28	70	15	16.5	29	24.0
HXP 303**	797600	30	415	620	111	80	40	62	20	27	33	34.0
HXP 503**	799600	50	455	860	159	127	40	—	20	34	62	140.0

* incl. safety net ** incl. safety blanket

HYDRAULIC PULLERS

BETEX TRI-SECTION PULLERS



BETEX Tri-section pullers

- The complete hydraulic tri-section puller set includes the Tri-section Plate for safe and easy dismantling.
- The narrow plate edges enable the dismantling of hard-to-grip components.
- The Tri-section Plate grip behind the inner and outer rings of the bearing, preventing the pulling force from being transmitted through the moving parts, minimizing the risk of bearing damaged.
- Most parts are forged SCM440 alloy steel, creating a very safe and durable product.

This complete puller set is available in 4 capacities and consists of:

- Integrated pump and cylinder
- Handle 360° adjustable
- Tri-section plate
- Puller block
- Connection rods
- Steel storage case

4, 6, 8 and 12 ton capacity!



BETEX Tri-section hydraulic pullers

Type	Art. no.	Cap. ton	Max. shaft length mm	Min. Spread mm	Max. Spread mm	Weight Kg
Tri-section set 4t	792160	4	211	30	160	20
Tri-section set 6t	792210	6	243	50	210	30
Tri-section set 8t	792340	8	243	50	270	34
Tri-section set 12t	792495	12	284	90	340	68

HYDRAULIC PULLERS

BETEX HPP, self-centering 3-in-1 PUSH PULLER



Push



Pull



Pull



Push



Push Puller: three-in-one tool

This unique patented design provides end users with a three-in-one tool to easily and safely fit or mount/dis-mount bearings and sleeves using either their inner or outer edges.

The push puller is specially designed for combined pushing and pulling. The forces are evenly distributed, creating a perfectly axial process.

The pushing jaws fit on the bearing's inner ring, preventing the transmission of forces and/or heat through the outer ring to the moving parts, minimizing the risk of bearing damage.

User-friendly

- Unique, patented double-acting cylinder.
- Unique jaw design for mounting and outer ring pulling without removing and changing.
- Three-jaw structure always provides an even and constant force, whether mounting, outer-ring pulling or inner-ring pulling.
- The extension bars can be used where necessary for extra reach.

- Self-centering design of the inner puller always provides an even force and prevents jaws sliding off during operation.

Safe

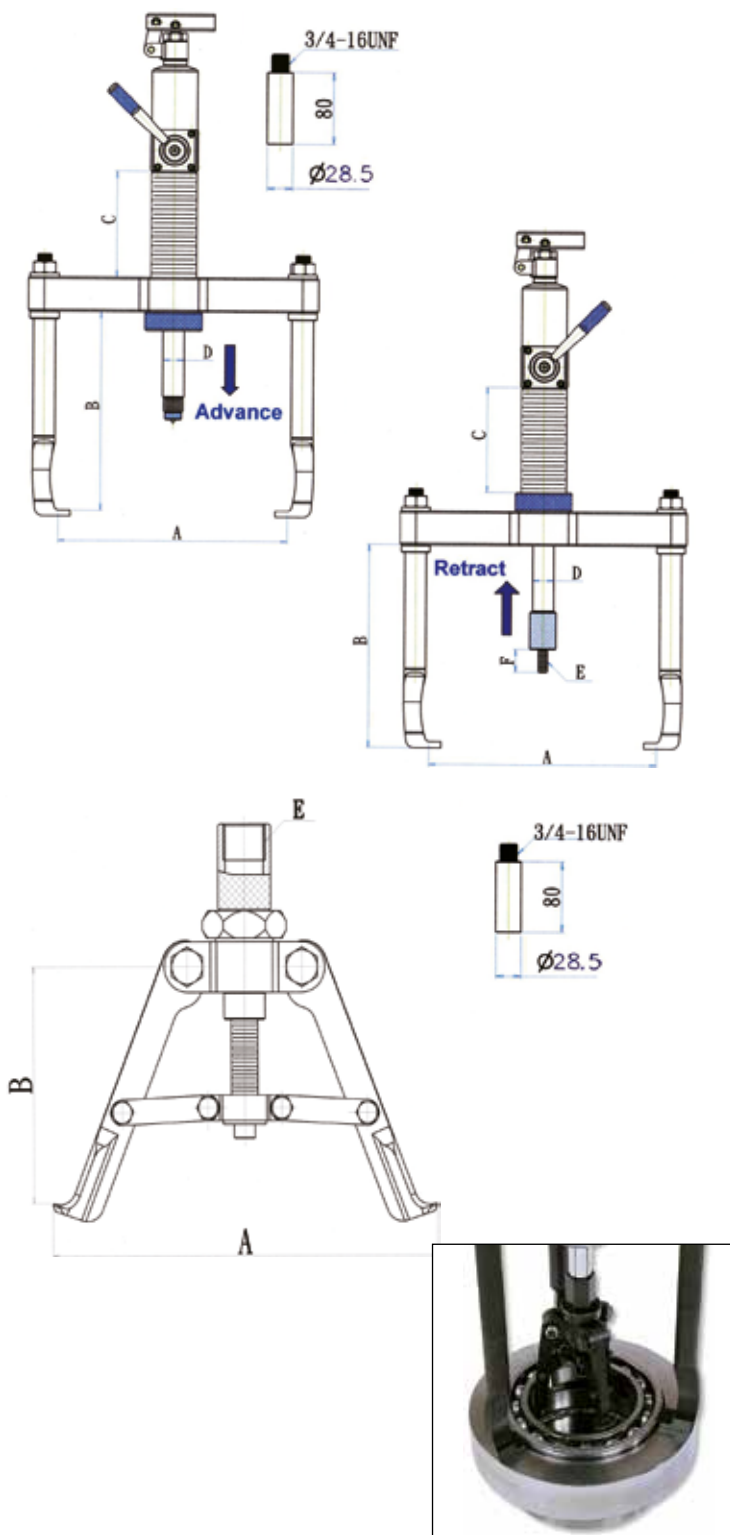
- The built-in safety valve ensures user safety and prevents damage to tool and job, prevents overload and ensures that you never exceed the maximum power capacity.
- Most parts are forged SCM440 alloy steel, creating a very safe and durable product.

Cost-reducing

- Three-in-one design reduces preparation, tool-reset time and duration of operation.
- This push puller is ideal for fitting and removing a wide variety of press-fit parts, including bushings, wheels, bearings, gears and pulleys.

HYDRAULIC PULLERS

BETEX HPP, self-centering 3-in-1 PUSH PULLER



BETEX Push Puller / 3-in-1

TIP! Use in combination with: page 60 + 61.

Type	Art. no.	Operations	Output ton	A mm	B mm	C mm	D mm	E	F mm	Weight Kg
HPP 123	794200	Installing Outer pulling Inner pulling	8 12 8	44 -280 85 -300 110 -210	270 260 130 -150	140 140 -	28 28 -	M12-P1.75 - 1"-12UNF	30 - -	19.5

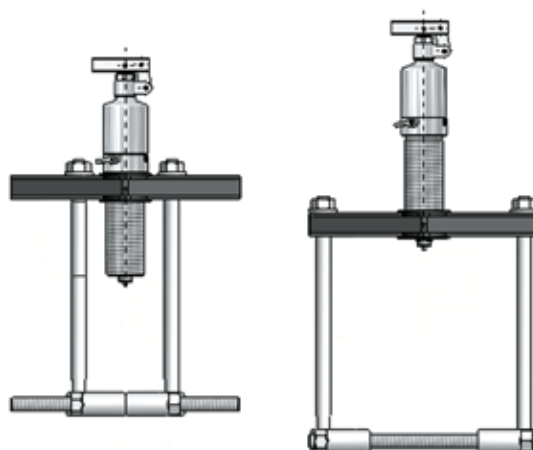
ACCESSORY SETS

BETEX BEARING SPLITTERS

This accessory set consists of:

- 1 puller block
- 2 connection rods (legs)
- 2 sets of bearing splitters for a min./max. Ø15-290 mm

You can use the cylinder from the HP/HSP/HXP series.



Accessory sets for 4,6, 8,12 ton pullers HP, HSP, HXP, HPP

Type	Art. no.	Cap. ton	Shaft length mm	Min/max spread mm	Weight kg
Acc. Set HP 43, HSP 43	791100	4	250	Ø 15-110	8.5
Acc. Set HP 63, HSP 63,	792100	6	270	Ø 25-180	11.5
Acc. Set HP 83, HSP 83, HXP 83	793100	8	270	Ø 40-220	12.6
Acc. Set HP 123, HSP 123, HXP 123, HPP 123	794100	12	380	Ø 45-290	18.0

ACCESSORY SETS

BETEX TRI-SECTION PLATES

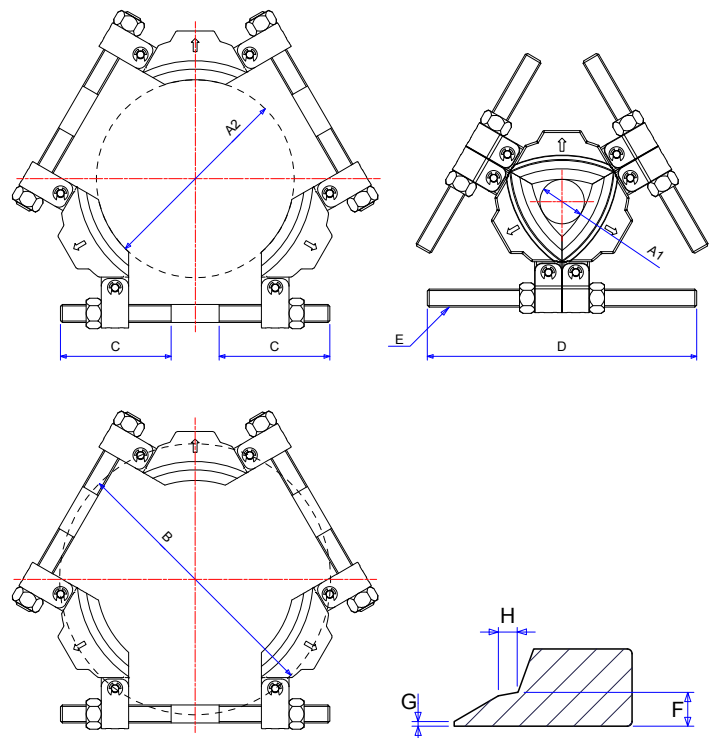


The tri-section plates are specially designed to be used in conjunction with the three-armed hydraulic pullers. The unique and patented swivel design creates maximum spread and applies even force at the most efficient point. The plates grip behind the inner and outer rings of the bearing, preventing the pulling force from being transmitted through the moving parts, minimizing the risk of bearing damage.

User-friendly

- Unique, patented swivel design creates maximum spread.
- The tri-section construction provides even-force distribution, preventing bearings from locking and/or tilting on the shaft during removal.
- Suitable for use in conjunction with all three-armed hydraulic pullers.
- Available in a wide range, covering the most common shaft sizes.

The Tri-section plates series consists of 4 different sizes of tri-section plates that are suitable for shafts ranging from 26 to 495 mm (2" to 19.5").



Use in combination with

- Tri-section 160: HP/HSP 43, 63
- Tri-section 210: HP/HSP 63, 83
- Tri-section 340: HP/HSP/HXP 83, 123, 203, HPP 123
- Tri-section 495: HP/HSP/HXP 203, 303

Type	Art. no.	Cap. ton	Available shaft diam		Spread B (mm max)	C mm	D mm	E	F mm	G mm	H mm	Weight kg
			A1 mm	A2 mm								
Tri-section 160	791160	6	26	160	216	105	240	5/8"-11UNC	8	2	6.5	3.5
Tri-section 210	791210	8	50	210	280	117	285	7/8"-14UNF	10	2	9	5.5
Tri-section 340	791340	20	90	340	460	175	430	1 1/4" -12UNF	14	2	8	18
Tri-section 495	791495	30	140	495	660	235	610	1 3/4" -12UNF	20	2	12	45