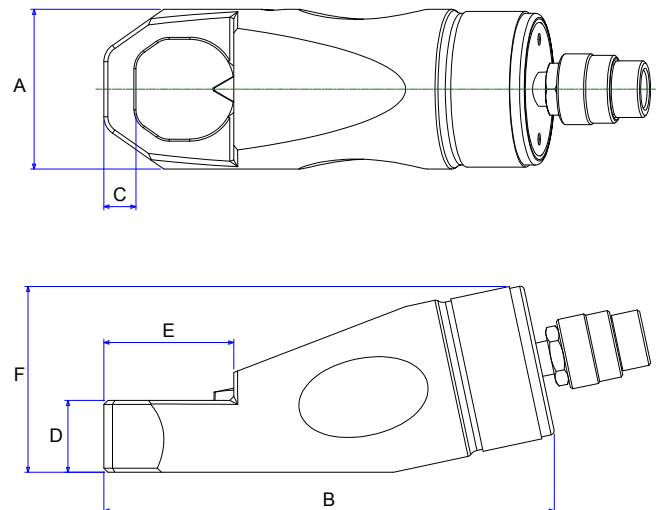


NUT SPLITTERS

BETEX HNS SERIES



- Compact design used in confined space with enough force to split rusted nuts.
- All models feature a rugged one-piece cutting frame coupled to a heavy-duty hydraulic cylinder.
- Specially designed "tool steel" cutter blade cuts the nut to the precise point where it cracks.
- Unique angled head design to keep full contact with the nut being penetrated.
- Unique angled cutter blade with radius to have greater resistance to cutting and breaking nuts.
- 5 popular models applicable to cover the largest range of nut sizes.



TIP! Use in combination with hand pumps, page 93 -95

Type	Art. no.	Bolt size	Bolt range mm	Cap. ton	Oil cap cm ³	A mm	B mm	C mm	D mm	E mm	F mm	Weight Kg
HNS 1924	781924	19 -24	M12-M16	10	20	60	167.2	10	25	40	68	2.1
HNS 2432	782432	24 -32	M16-M22	15	60	70	178	13	30	52	76	3.1
HNS 3241	783241	32 -41	M22-M27	20	80	80	226	15	36	65	93	4.2
HNS 4150	784150	41 -50	M27-M33	35	155	95	244	21	45	76	106	8.0
HNS 5060	785060	50 -60	M33-M39	50	240	106	269	24	55	92	125	11.5